

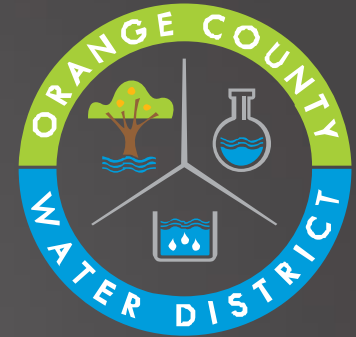


# OCWD FIRO OBJECTIVES

Greg Woodside, P.G., C.HG.

Executive Director of Planning & Natural Resources

August 1, 2018

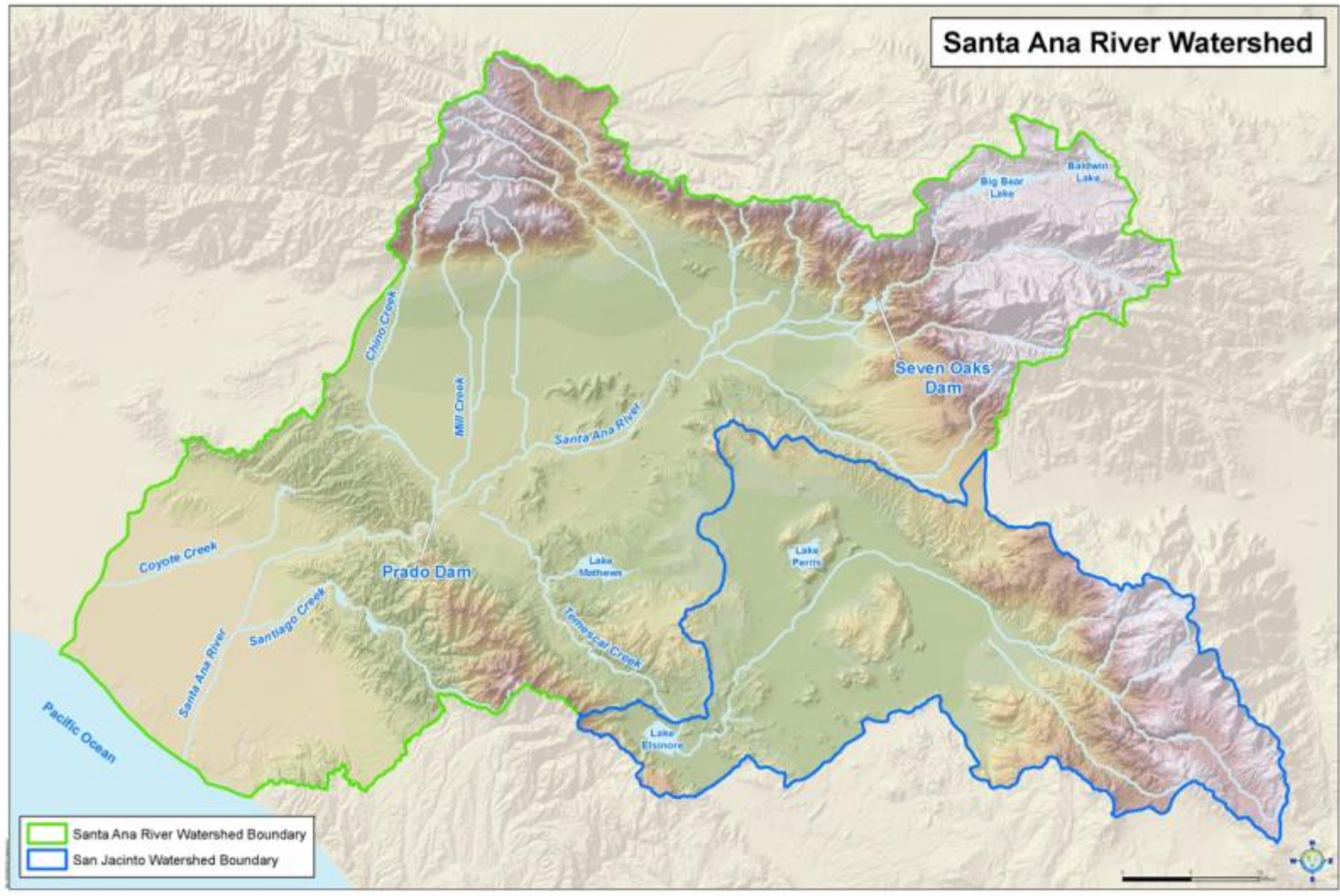


SINCE 1933



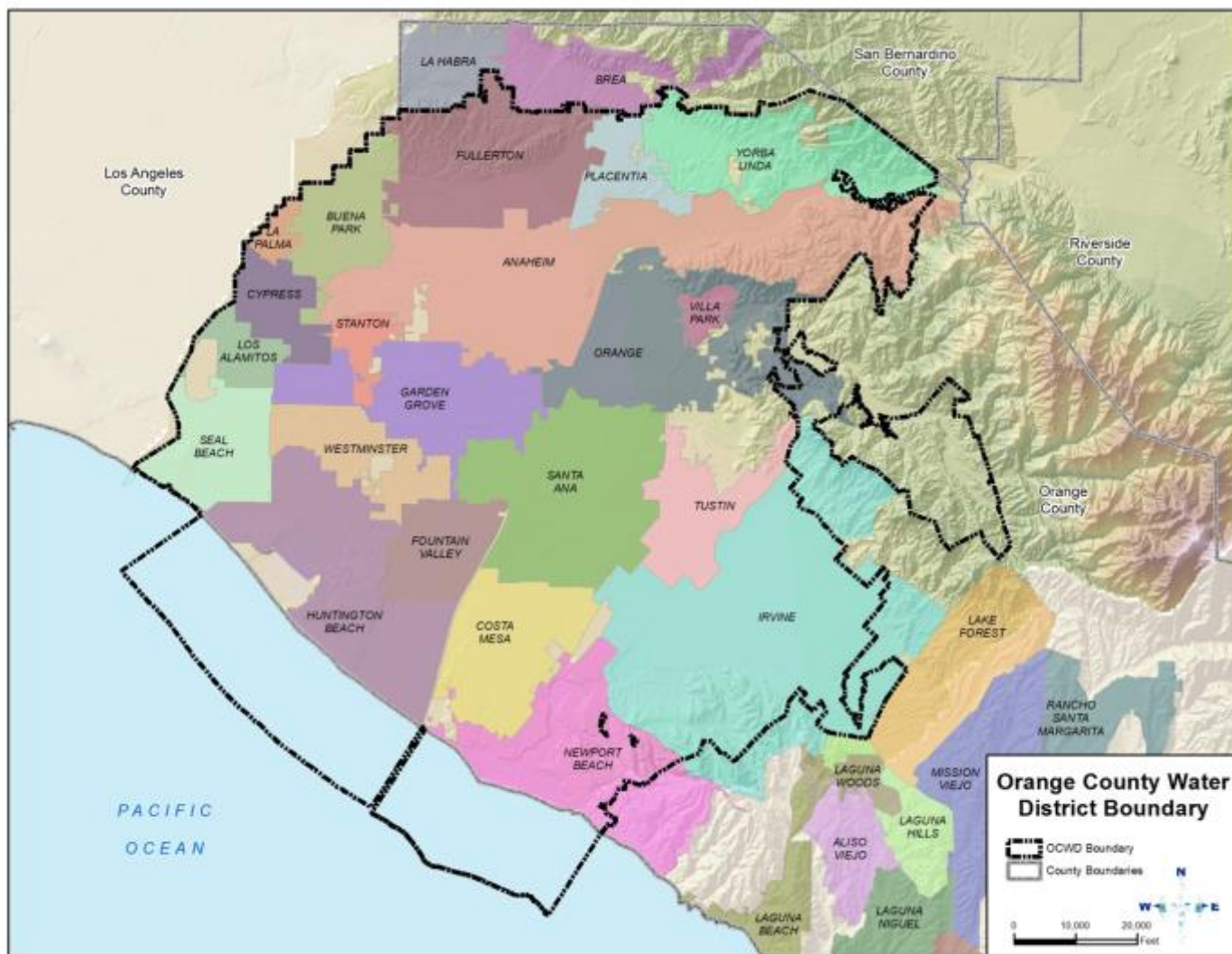


# The Orange County Groundwater Basin is in the lower Santa Ana River watershed



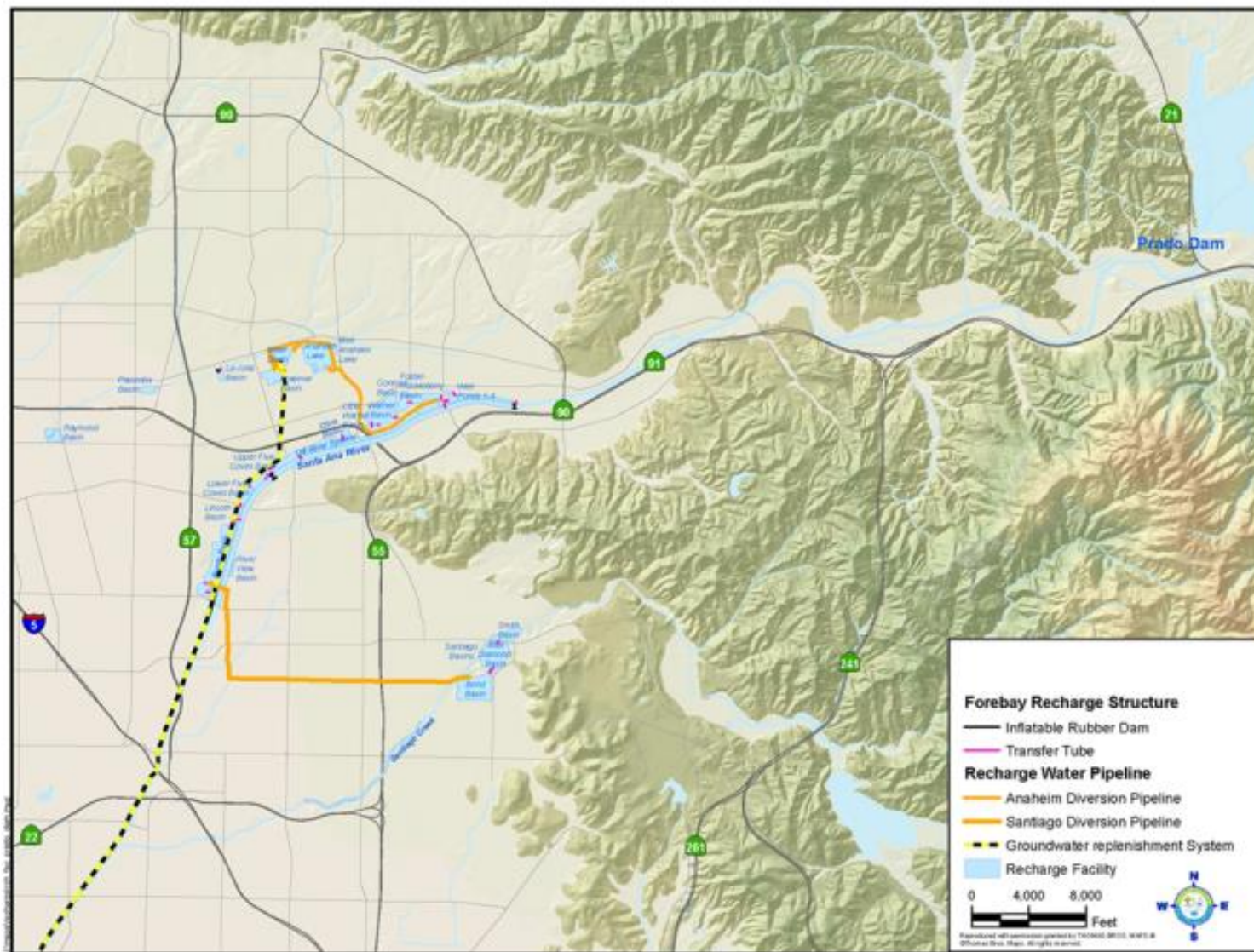


# OCWD overlies the groundwater basin in the northern half of Orange County



Basin provides  
75% of water  
supply for 2.4  
million people





Starting  
11 miles  
downstream,  
OCWD  
recharges  
Santa Ana  
River water  
captured at  
Prado Dam



# Army Corps of Engineers & OCWD have long-standing Partnership in Prado Basin

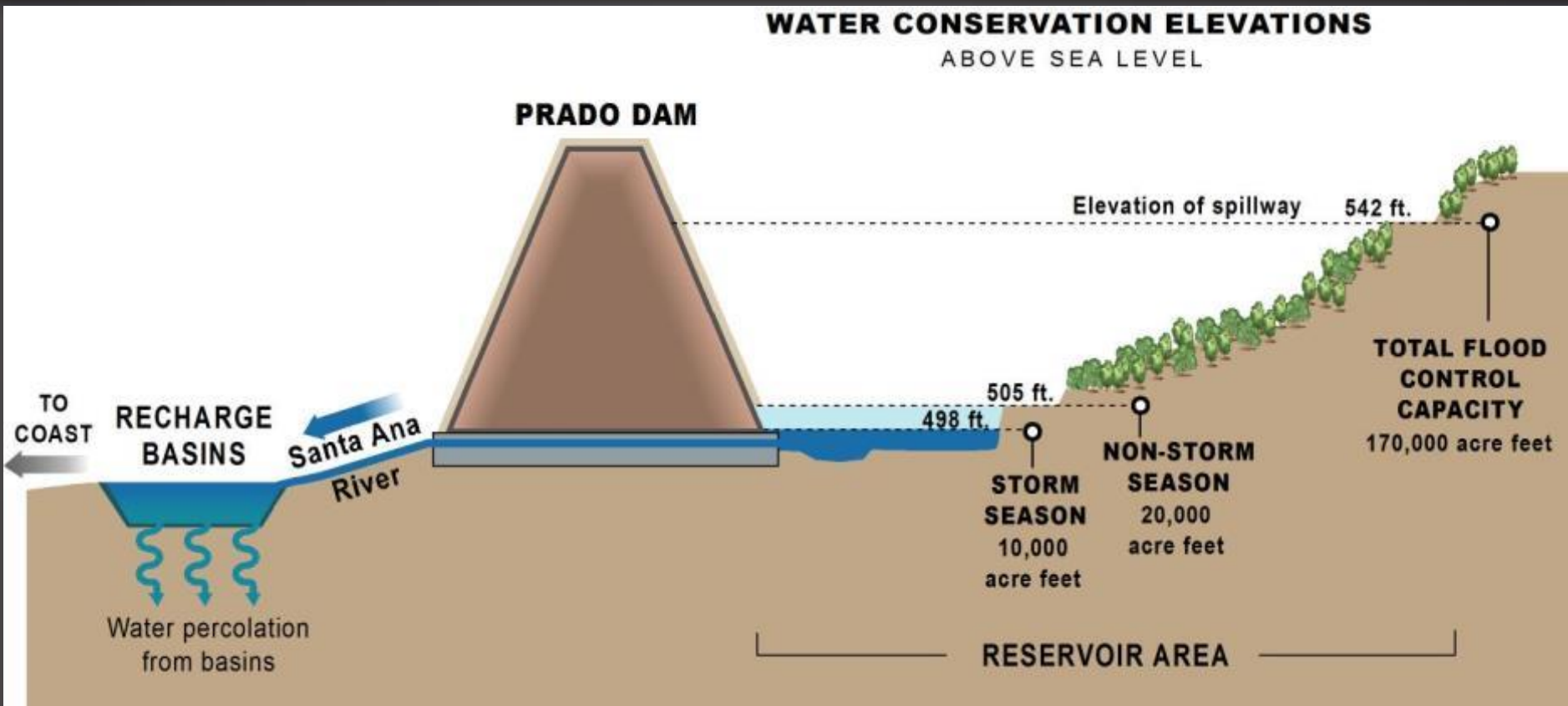


- Ecosystem restoration
- Temporary stormwater capture in buffer pool (aka 'water conservation')
- Stormwater capture does not affect flood risk management

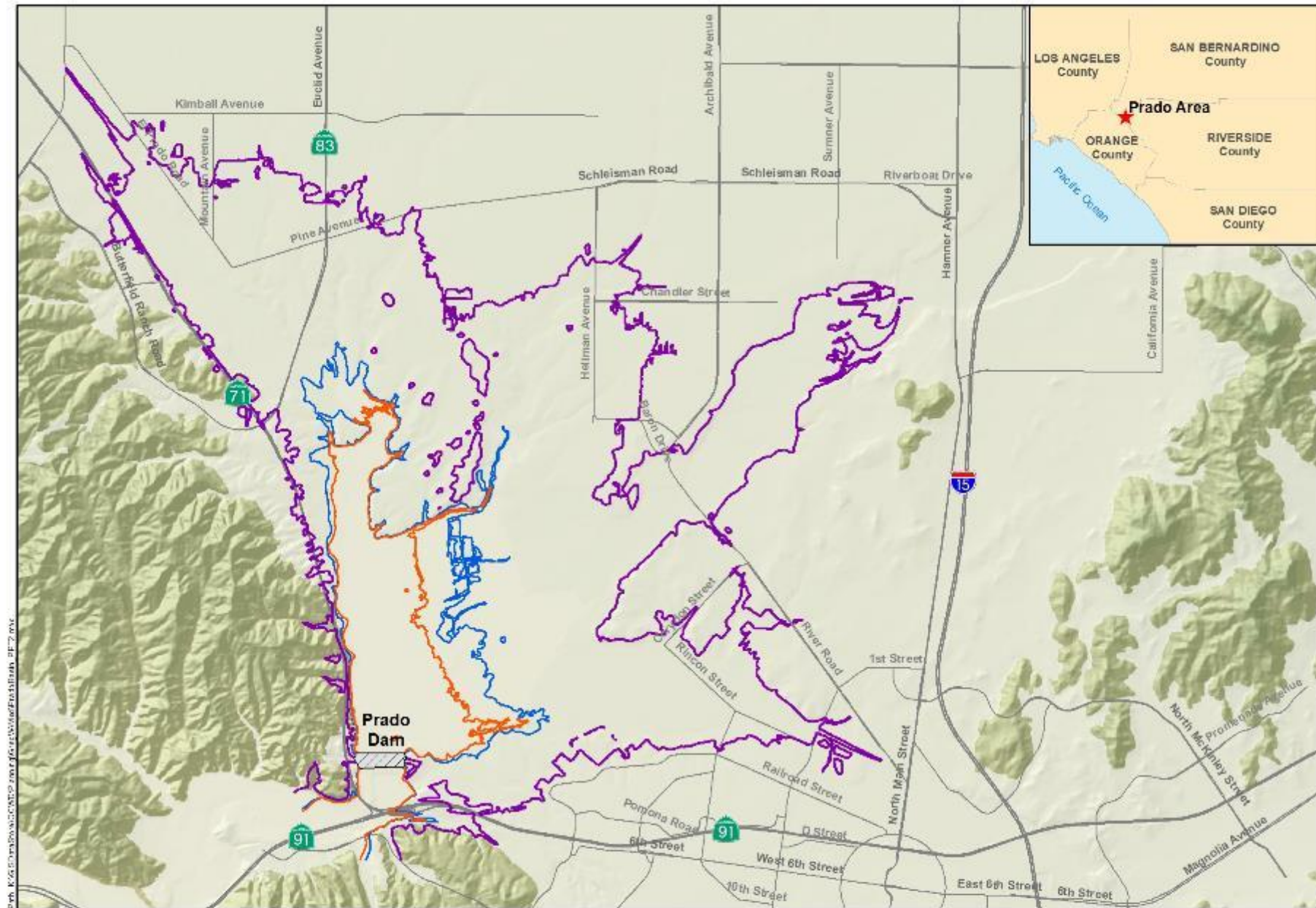




# OCWD and USACE cooperate to store and capture up to 20,000 af of storm water at a time



The ACOE coordinates the release rate with OCWD to match the capacity of downstream recharge system.



Path: K:\GIS\PROJECTS\2007\Prado\MapFiles\PradoArea\_2007.mxd



#### Prado Reservoir Elevations (feet, NGVD29)

— 499 feet, Maximum Buffer Pool Elevation for October to February

— 505 feet, Maximum Buffer Pool Elevation for March to August

— 596 feet

Data Source: Orange County Public Works, 2008

**Prado Area**



## Prado FIRO Objectives (OCWD)

- Provide tools for Corps to:
  - Maximize use of available temporary storage space
  - Maximize stormwater capture for downstream beneficial use in manner that does not adversely effect flood risk management
  - Assist with analysis of potential future higher water conservation elevation
- Increase local water supply and decrease imported water usage