

# Prado Basin Environmental Considerations

Ken Corey, Assistant Field Supervisor  
U.S. Fish and Wildlife Service

# Prado Basin: a biologically rich area



# Prado Basin Environmental Considerations Include:

- Riparian forest of statewide significance
- High species diversity
- Endangered species habitat throughout Prado Basin



# Species Currently Listed Under the Endangered Species Act

- Least Bell's vireo
- Southwestern willow flycatcher
- Western yellow billed cuckoo
- Santa Ana sucker
- Coastal California gnatcatcher

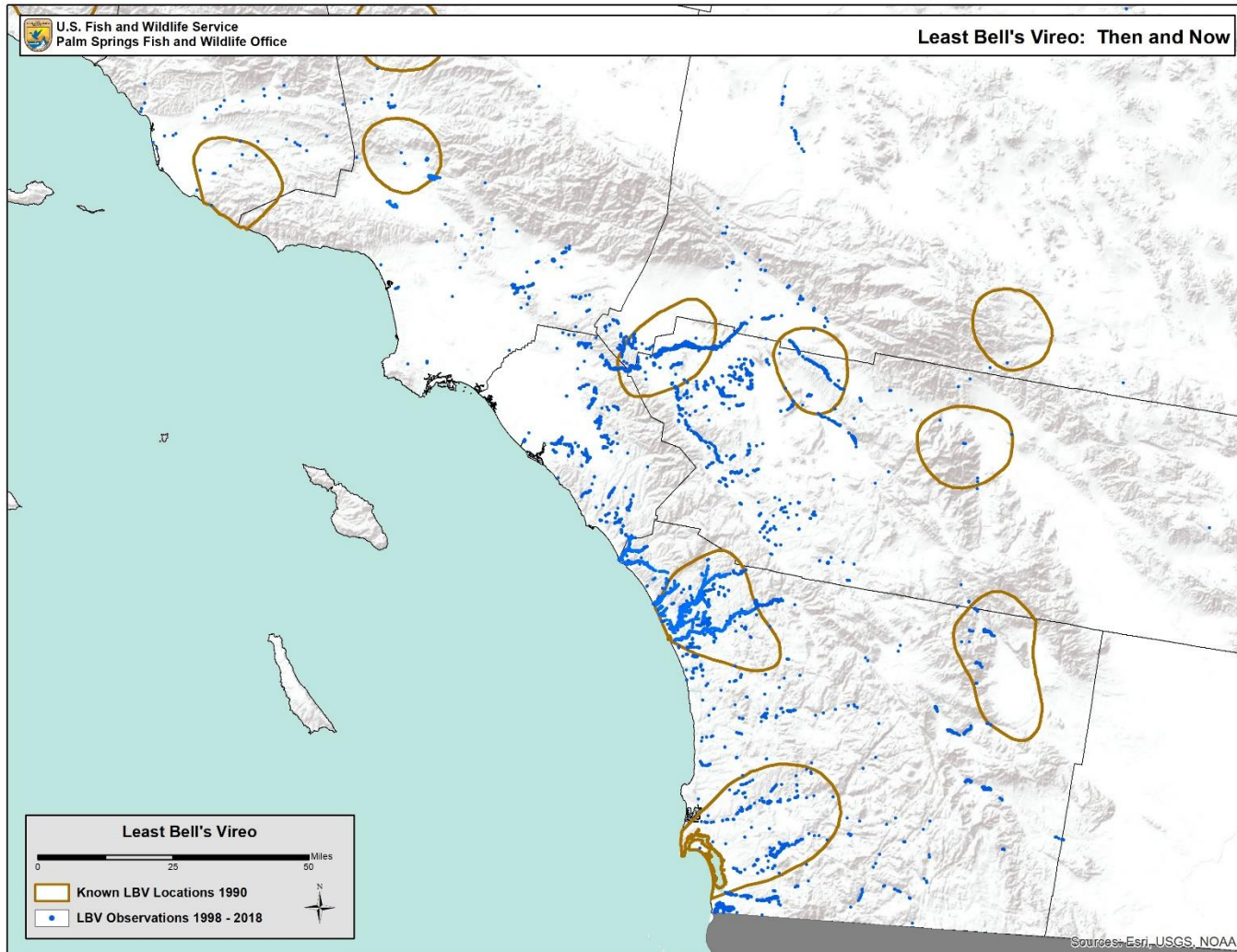
# Least Bells Vireo



# Vireo History under ESA

- Vireo listed in 1986
- Vireo population at listing was 300 pairs
- Loss of habitat and cowbird parasitism were the primary reasons for its decline
- Range of vireo is still greatly reduced







**Least Bell's Vireo Survey Data  
For 1983**

● Least Bell's Vireo Locations (Count: 10)

0 2,000 4,000  
Feet

Digital imagery flown in Winter 2009. 1-foot pixel resolution.  
Licensed to OCWD by Eagle Aerial, Inc.  
Distances and features may be distorted at this scale.








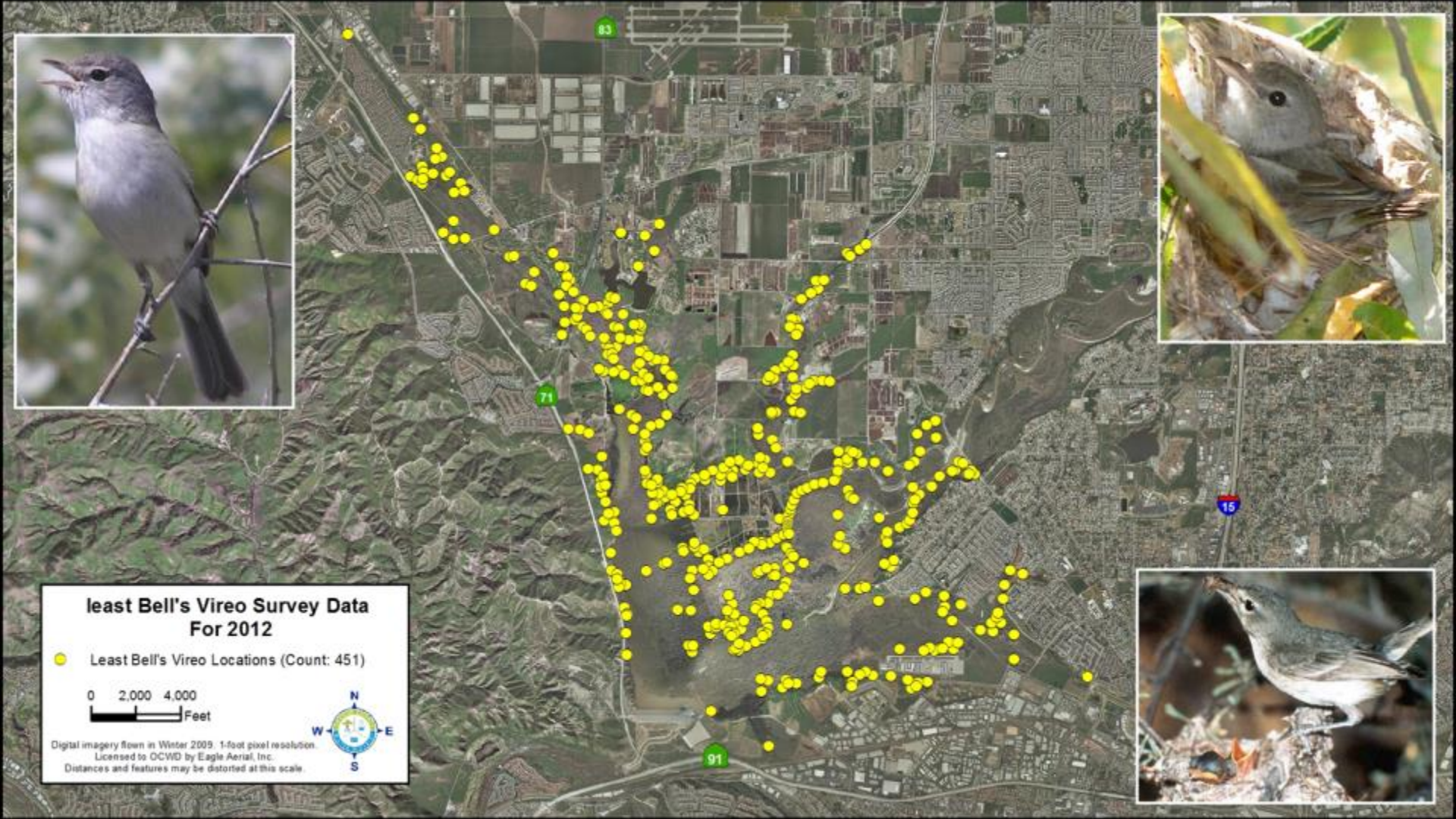
**least Bell's Vireo Survey Data  
For 2012**

● Least Bell's Vireo Locations (Count: 451)

0 2,000 4,000  
Feet



Digital imagery flown in Winter 2009. 1-foot pixel resolution.  
Licensed to OCWD by Eagle Aerial, Inc.  
Distances and features may be distorted at this scale.





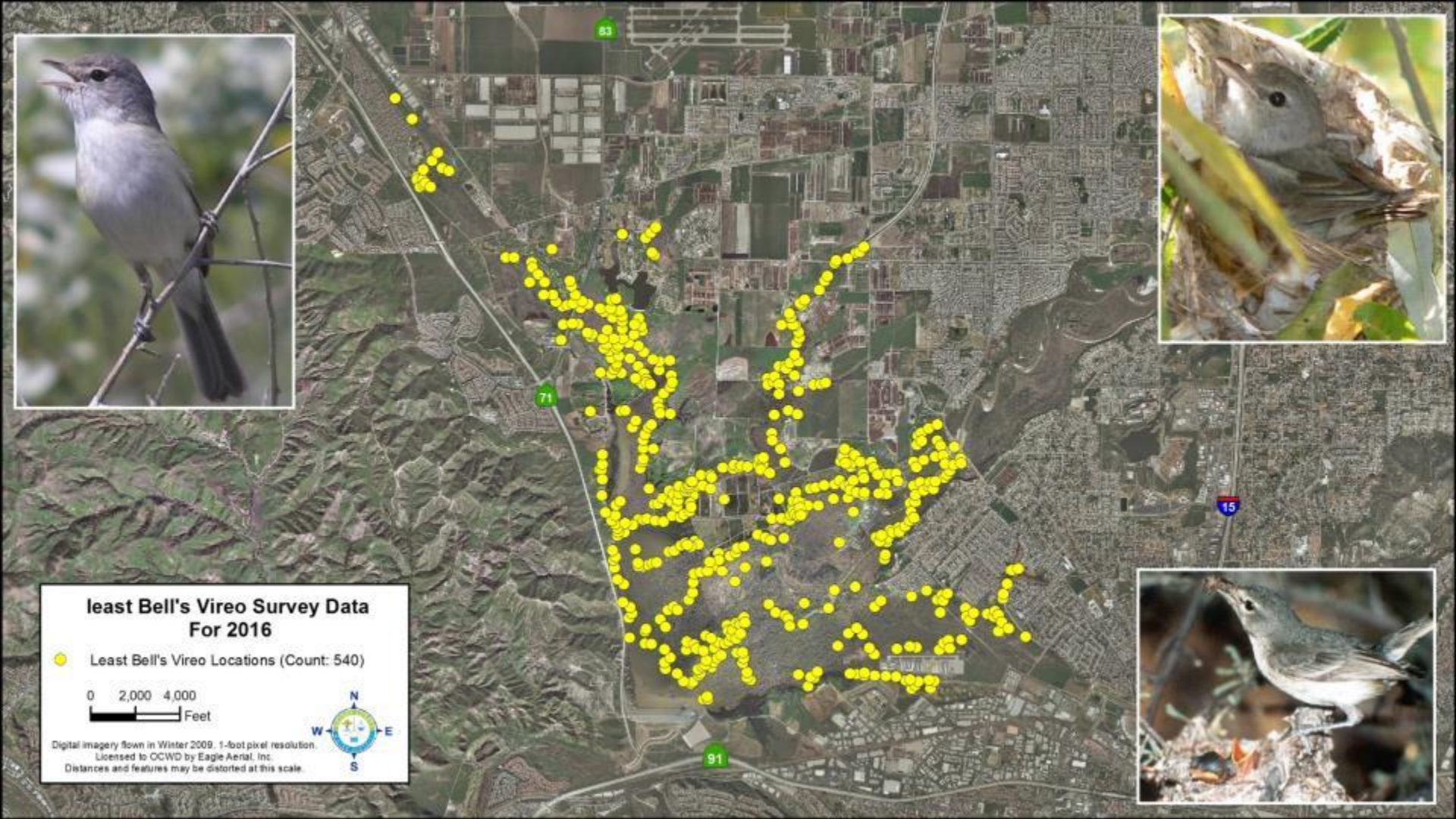


**Least Bell's Vireo Survey Data  
For 2016**

● Least Bell's Vireo Locations (Count: 540)

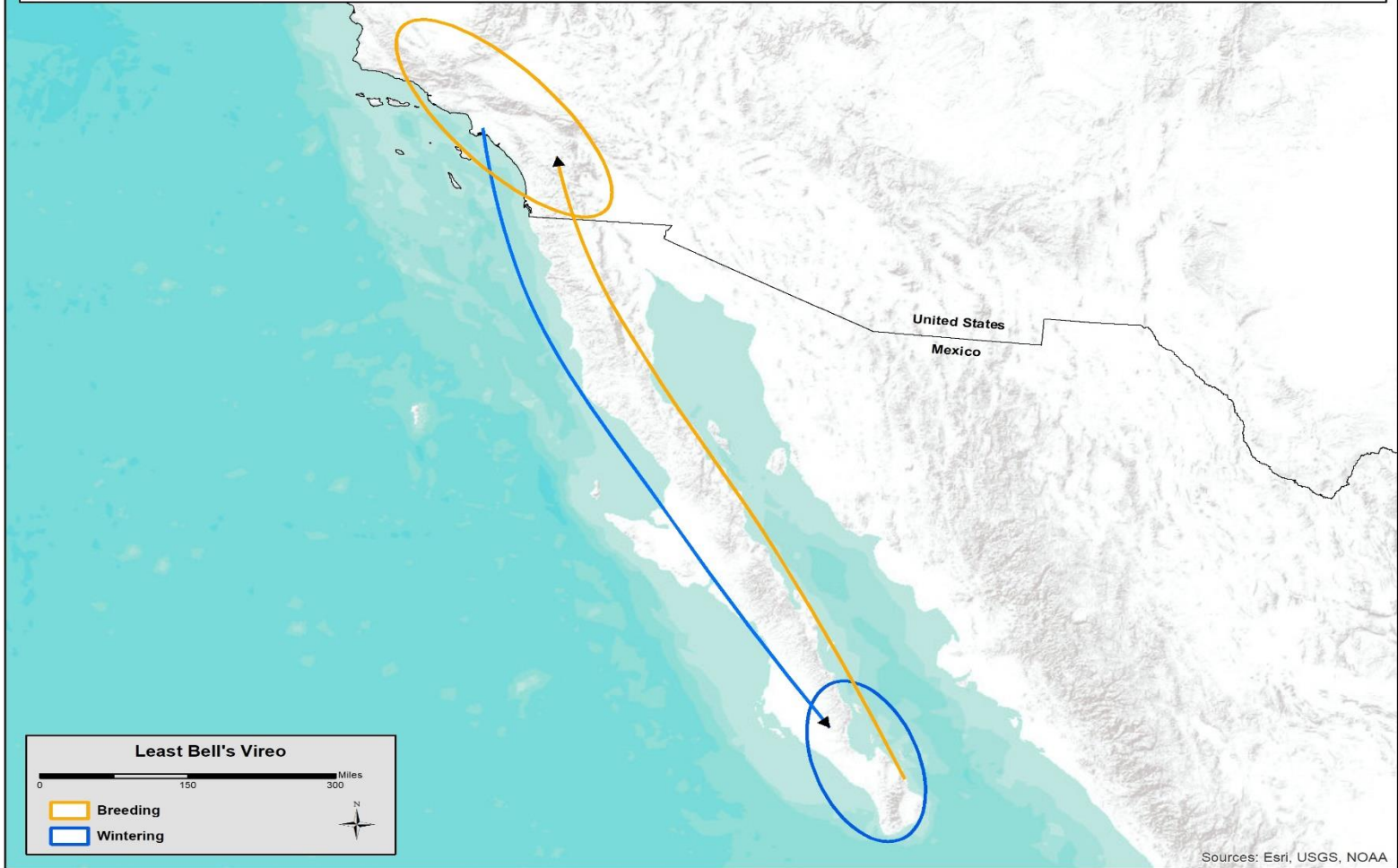
0 2,000 4,000  
Feet

Digital imagery flown in Winter 2009. 1-foot pixel resolution.  
Licensed to CCWD by Eagle Aerial, Inc.  
Distances and features may be distorted at this scale.



# Vireo Migration

- Least Bell's Vireo spend the winter months in southern Baja California, Mexico
- Vireos typically arrive at Prado by mid to late March
- Vireos typically leave Prado by mid to late September



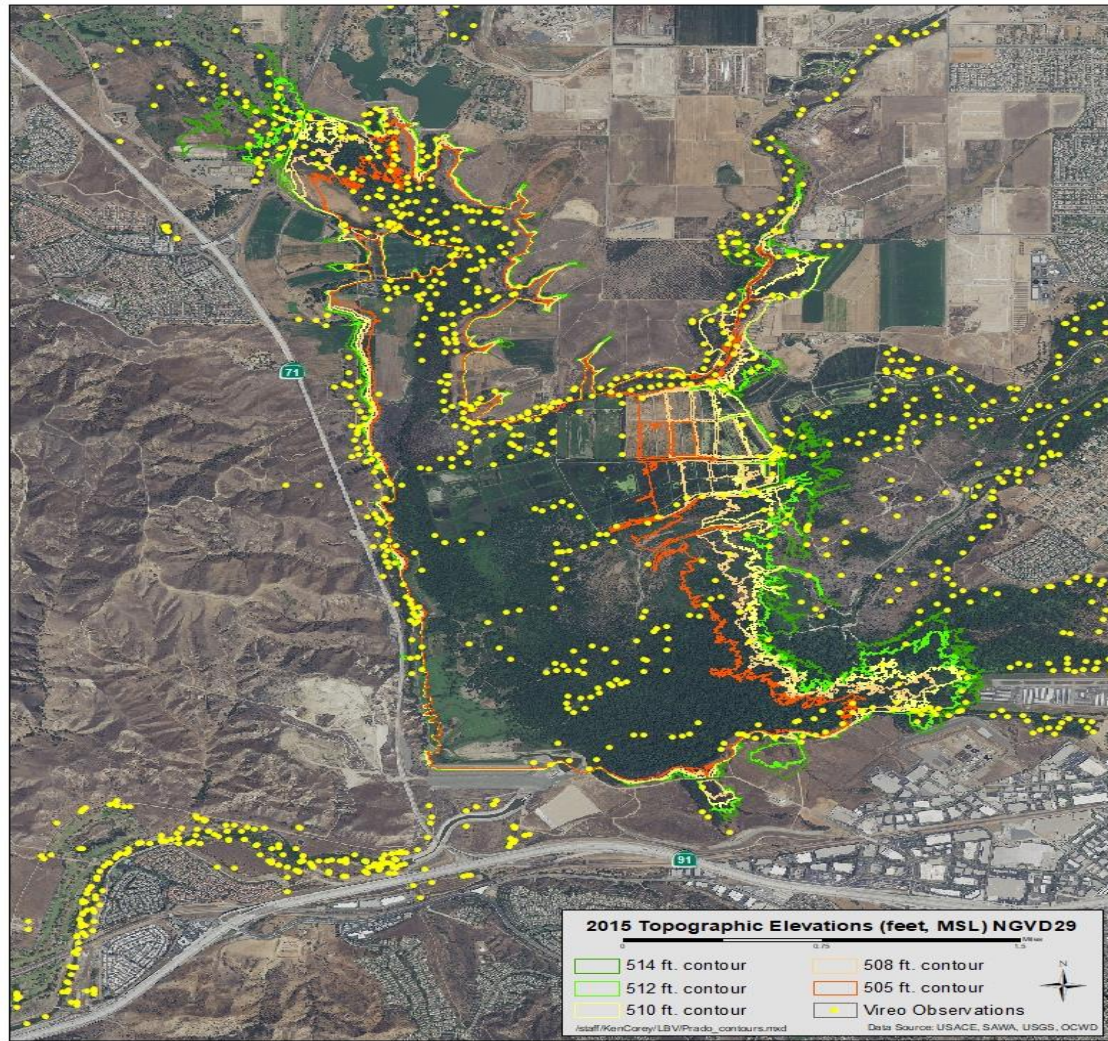


# Vireo Nesting Behavior

- Vireos tend to nest in the lowest stratum of dense riparian habitat
- Vireo nests have been susceptible to flooding if water levels rise post nesting







# Proposed Investigations

- Develop guidelines on the relation between inundation depth and duration and timing of recovery of riparian vegetation in Prado Basin
- How to better predict the arrival of vireo each spring



# Proposed Investigations cont.

- Identify other reservoir conditions that affect vireo populations such as insect biomass during wet and dry years
- Identify opportunities for vireo mitigation

# Results of Investigations

- Integrate information from the investigations into managing Prado
- Implement specific management prescriptions to aid recovery of riparian vegetation and vireo particularly in the lower basin after wet years