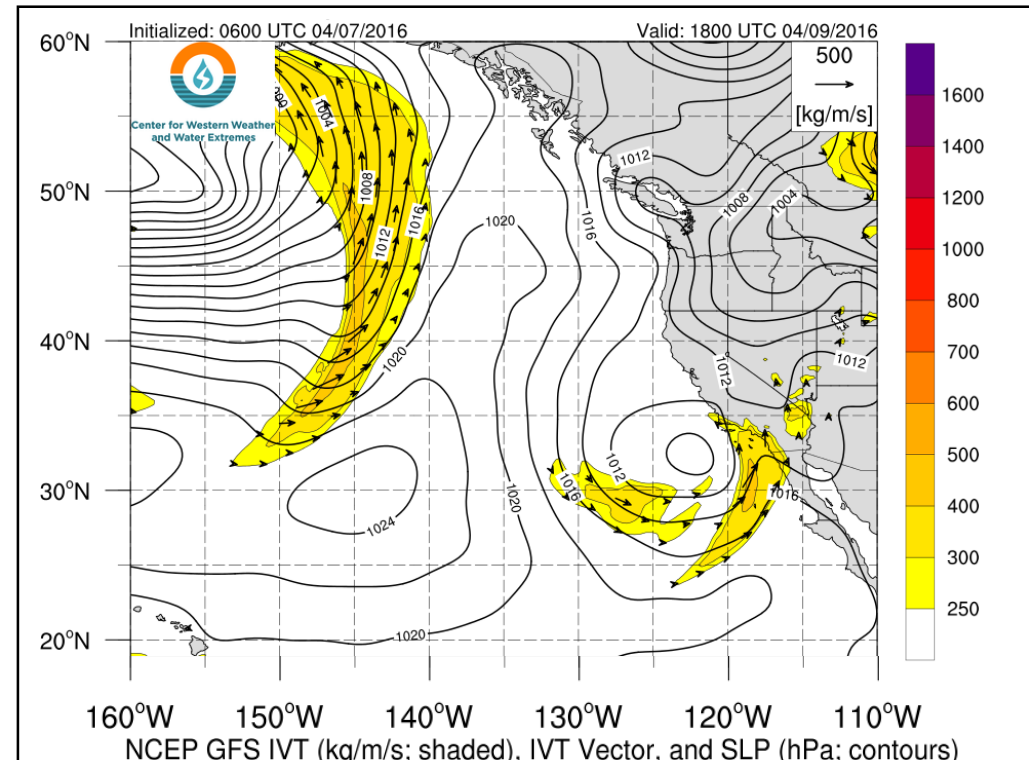
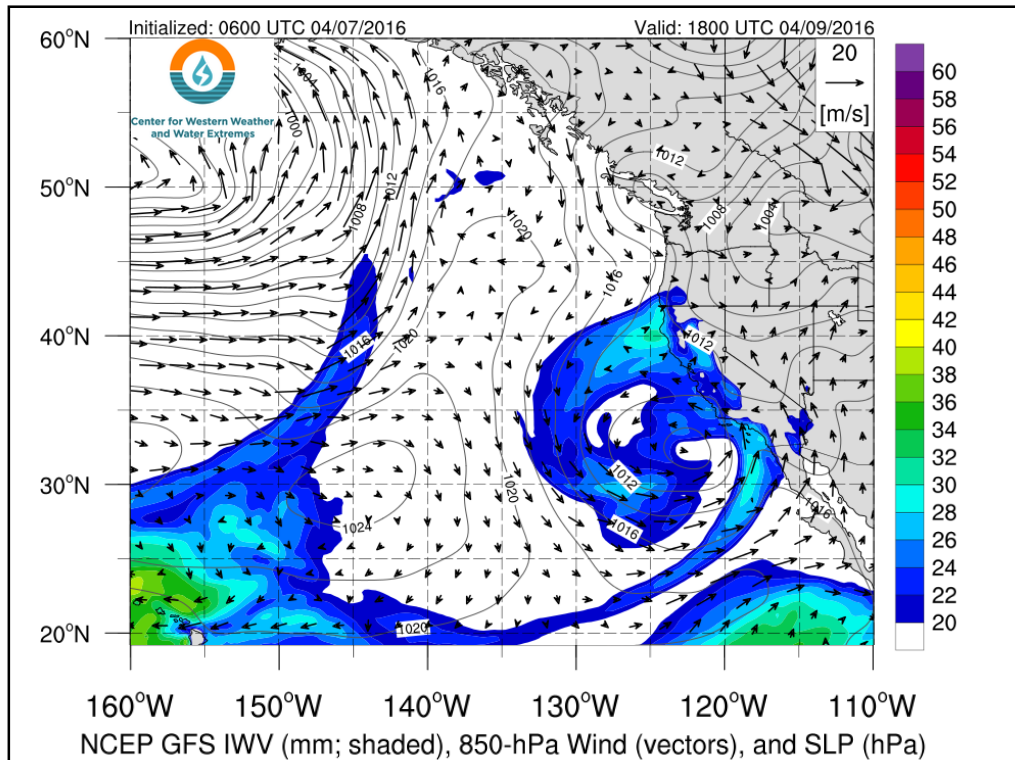


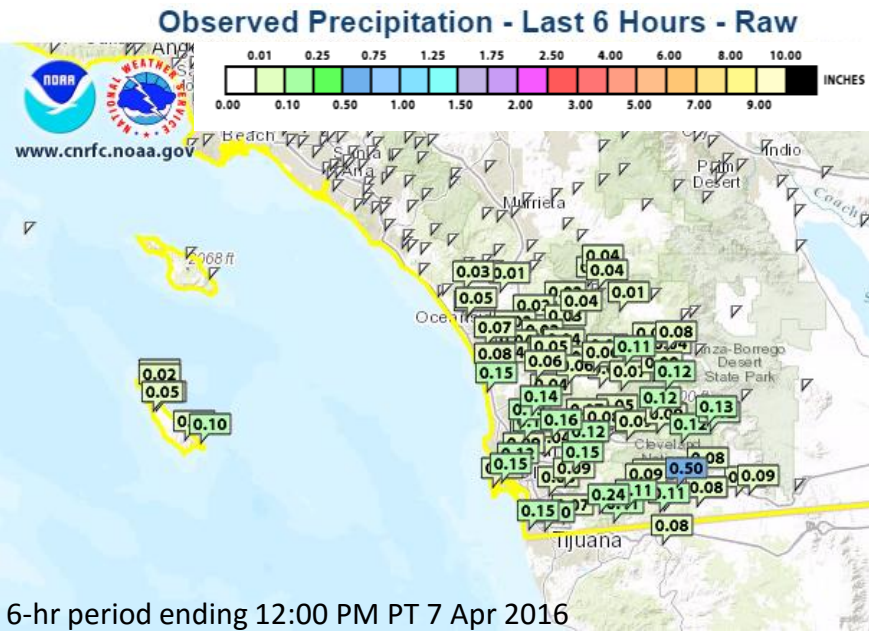
CW3E Atmospheric River Update – Outlook

AR conditions are predicted to occur over southern CA on 8-10 April 2016

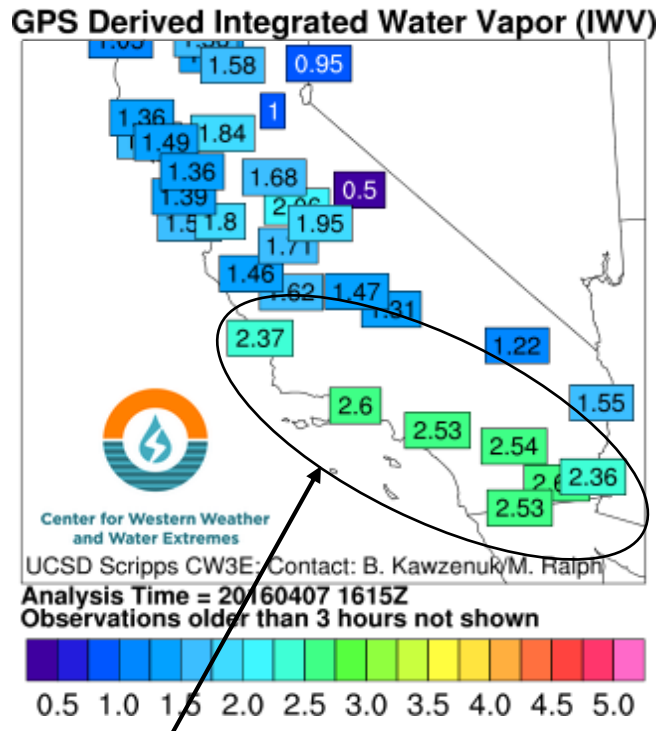
- High amounts of IWV are currently over southern CA due to a weak low pressure system off the coast
- Weak-to-moderate precipitation began Thursday morning and will continue throughout the day
- A closed low will develop off the coast Fri-Sat and cause weak AR conditions over southern CA
- Upslope flow of IVT will focus the strongest precipitation in mountain ranges (especially Transverse Ranges due to SSW flow)
- Thunderstorm development Saturday evening is possible along a cold front causing higher isolated precipitation amounts
- This events meets two of the three defining AR characteristics: IWV >20 mm and IVT >250 kg m⁻¹s⁻¹, however the spatial characteristics of the IVT/IWV is less than the minimum requirements to be an AR
 - Locations along the west coast between ~36 and ~30°N will experience AR conditions (IWV >20 mm and IVT >250 kg m⁻¹s⁻¹), however this is not considered an AR



CW3E AR Update – Current Conditions: 12 PM PT 7 Apr 2016

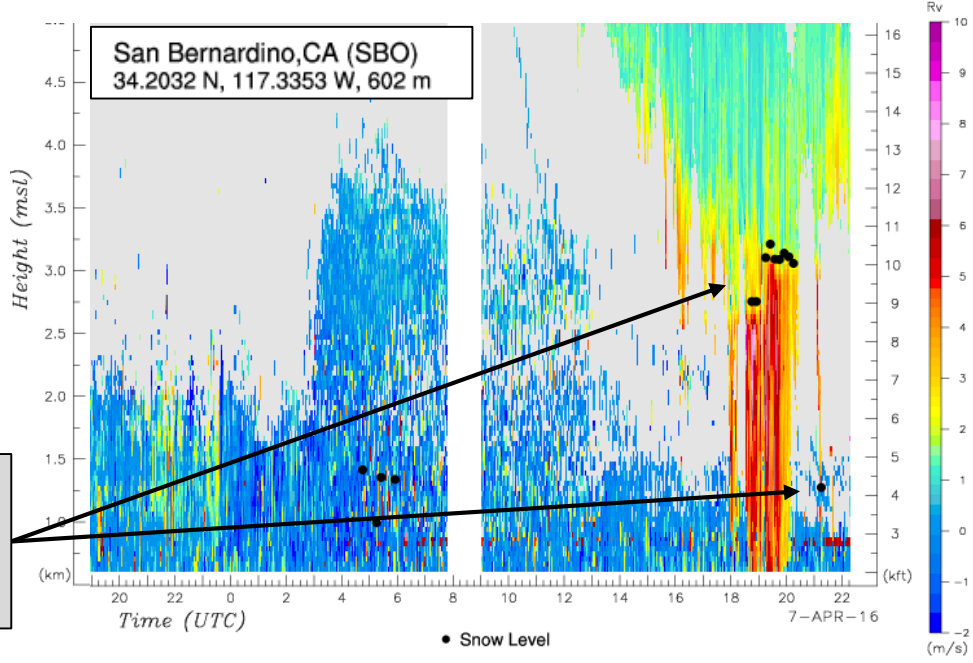
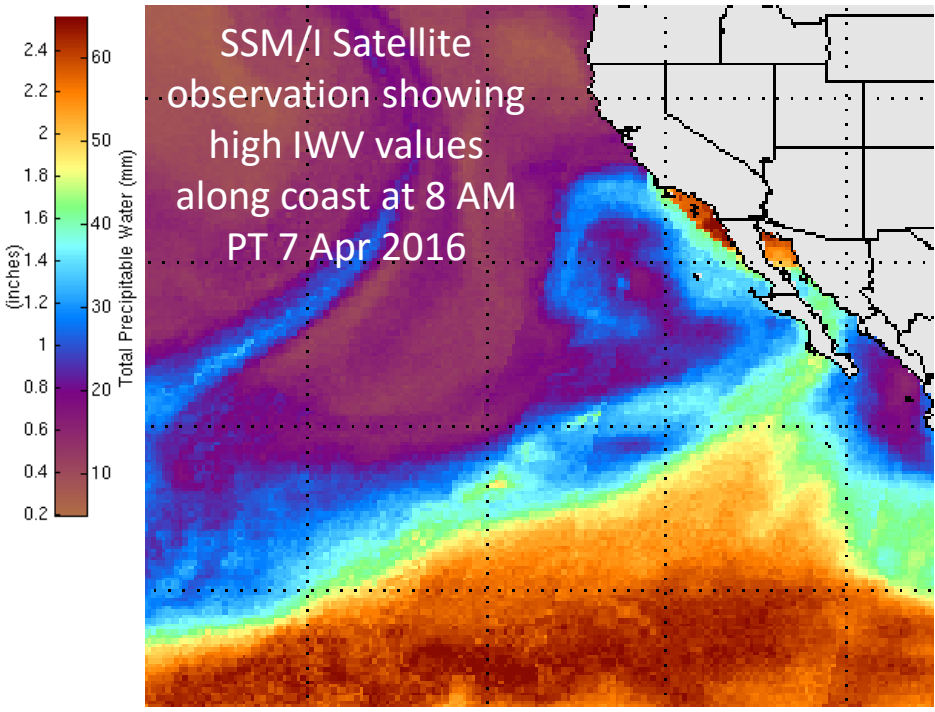


Light precipitation has fallen over southern CA beginning at roughly 6 AM PT 7 Apr 2016



High values of IWV over southern CA at 9 AM PT 7 Apr 2016

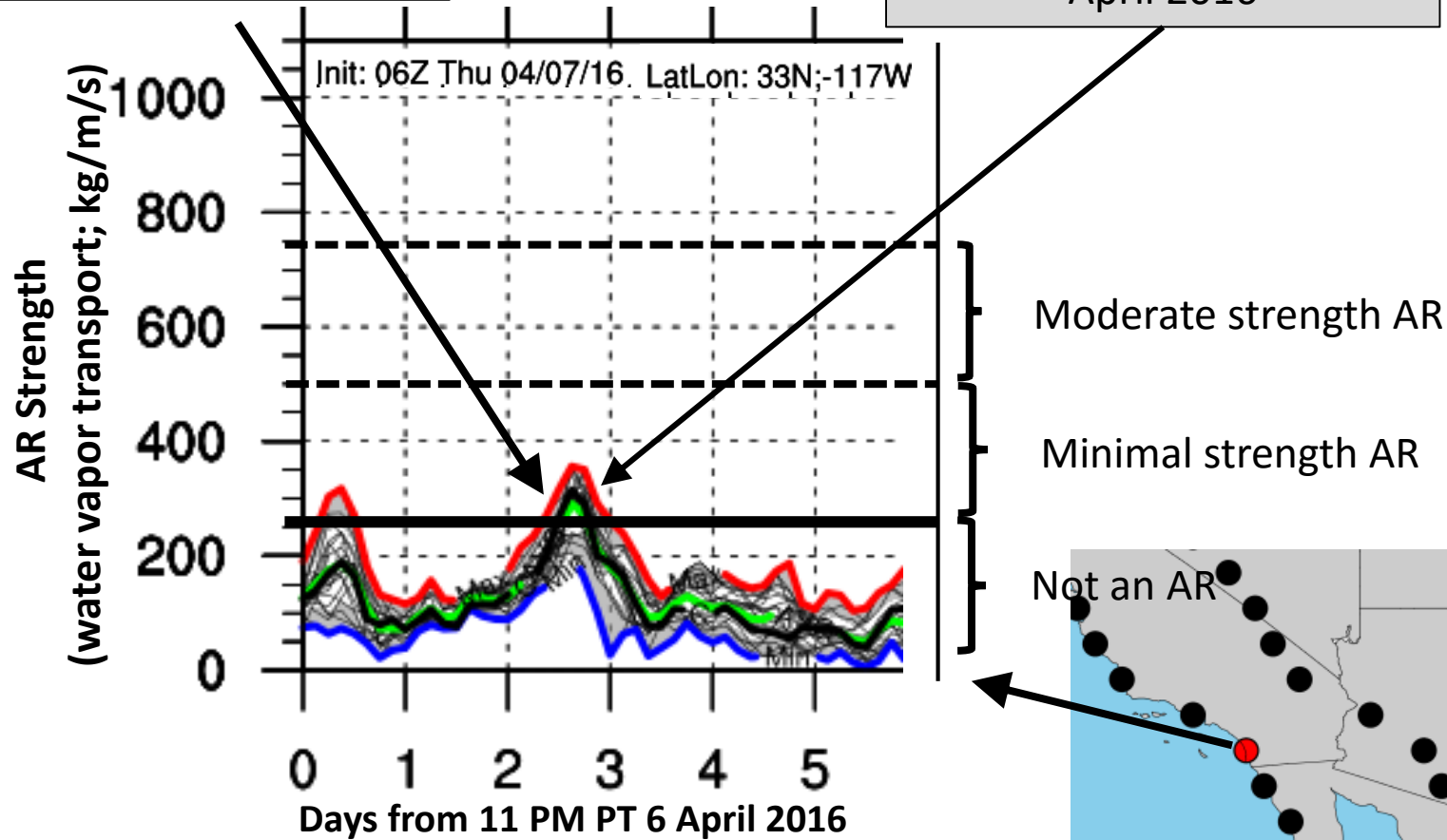
Snow Levels at San Bernadino at ~3.1 km (~10,000 ft) with significant drop to 1.3 km (4200 ft) in latest observation at 2:45 PM PT



AR Forecast Summary for Southern California

Duration of minimal strength AR conditions about 10 hours

Short duration of AR conditions predicted on 8 April 2016



Precipitation forecast from NOAA/NWS California/Nevada River Forecast Center

