

Quick Look at Storm Currently Impacting California

Updated: 31 March 2025

A storm system will continue to bring rain and mountain snow to Northern and Central California through tomorrow Tue 1 Apr. Later this week, a major pattern shift is expected to bring warmer and drier conditions to much of the western US.

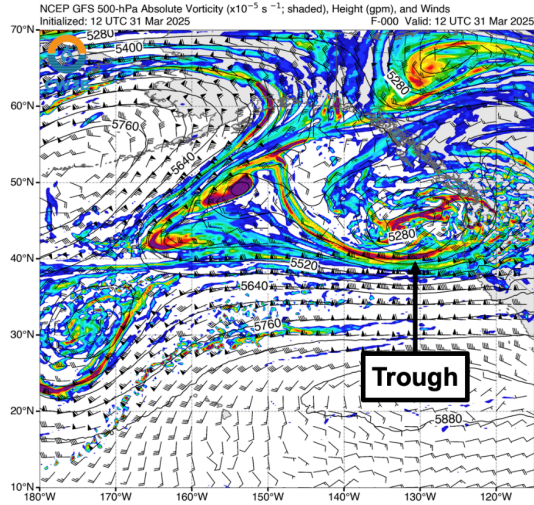
Forecast Highlights:

- A slow-moving trough off the US West Coast will drive moderate-to-heavy precipitation over Northern and Central California today and tomorrow.
- Over the next few days, an amplifying ridge is forecast to build over the Northeast Pacific and gradually migrate eastward towards the US West Coast.
- Large-scale ridging over the Northeast Pacific is expected to shut off landfalling AR activity over the US West Coast, as indicated by the very low likelihood (<25% probability) of AR conditions ($IVT \geq 250 \text{ kg m}^{-1} \text{ s}^{-1}$) in CW3E's AR Landfall Tool through Sun 6 Apr.
- The current storm is forecast to produce an additional 3–6 inches of precipitation today through early Wed 2 Apr in portions of the Northern California Coast Ranges, Klamath Mountains, and Sierra Nevada.
- All deterministic models and most GEFS, EPS, and West-WRF ensemble model members are forecasting >2.5 inches of mean areal precipitation from this storm in the New Bullards Bar reservoir catchment. The deterministic 3-km and 9-km West-WRF initialized with the GFS model are both forecasting this storm to produce >5% of the catchment's normal annual precipitation (~3.75 inches) in a 48-hour period.
- Low freezing levels will allow a significant portion of precipitation to fall as snow in watersheds surrounding the Klamath Mountains, southern Cascades, and Sierra Nevada.
- At least 12–36 inches of additional snowfall are forecast above 5,000 feet, with higher amounts possible near the crest in the Northern and Central Sierra Nevada. Major-to-extreme winter storm impacts are expected in these areas due to heavy snow and strong winds.
- The return of ridging near the US West Coast will likely usher in a period of warmer and drier weather to much of the western US late this week into early next week.
- Yesterday's 6–10 Day outlooks from the Climate Prediction Center (CPC) showed >60% probability of above-normal temperatures >40% probability of below-normal precipitation over the Pacific Northwest during Sat 5 Apr – Wed 9 Apr.

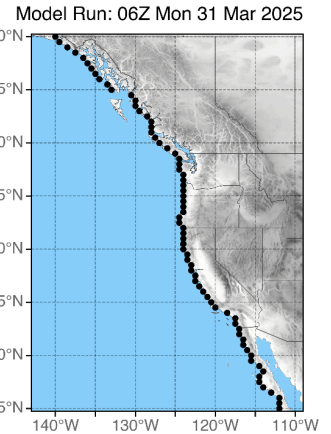
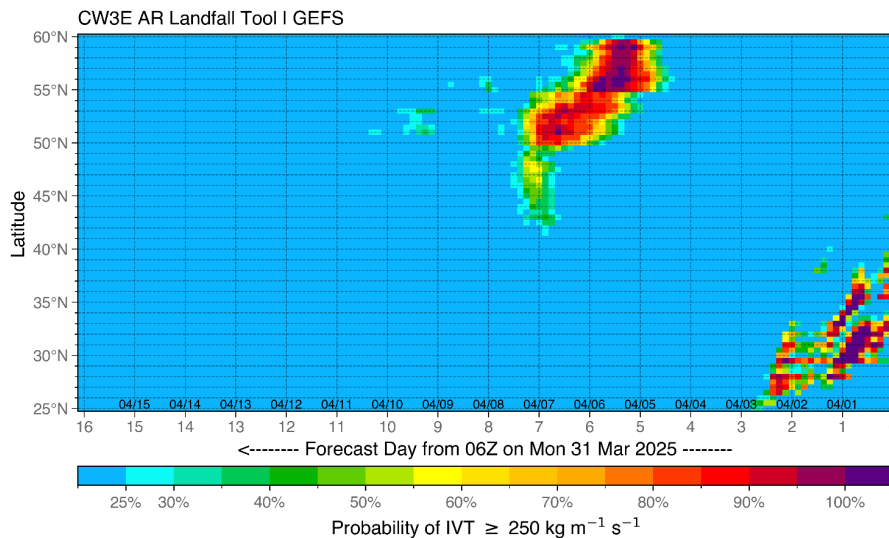
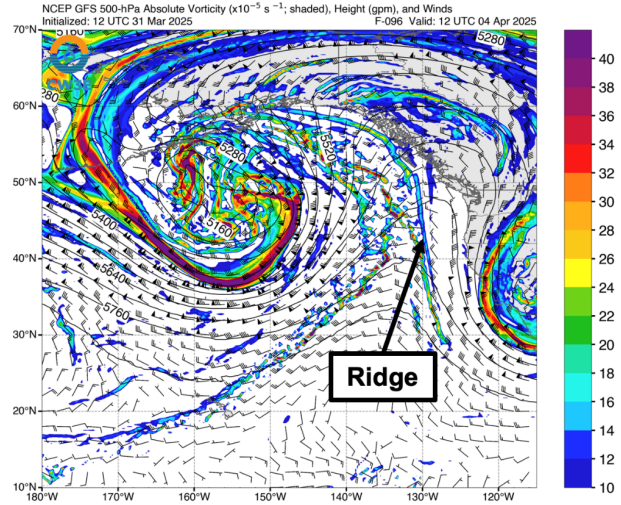
Stay alert to official NWS forecasts, watches, and warnings at [weather.gov](https://www.weather.gov) and follow guidance from local emergency management officials

GFS 500-hPa Vorticity & Geopotential Height

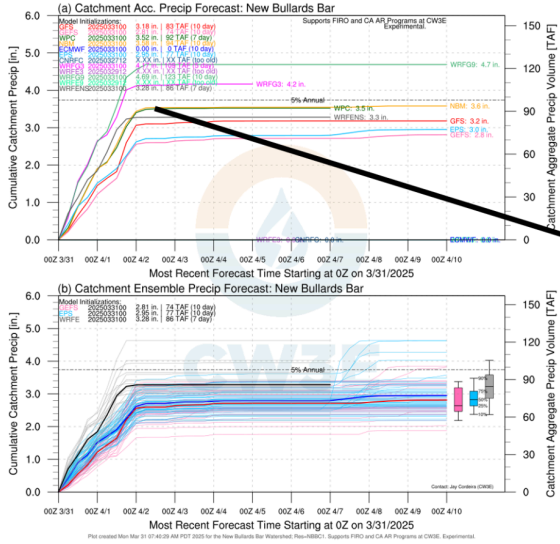
Valid 5 AM PDT 31 Mar (F-000)



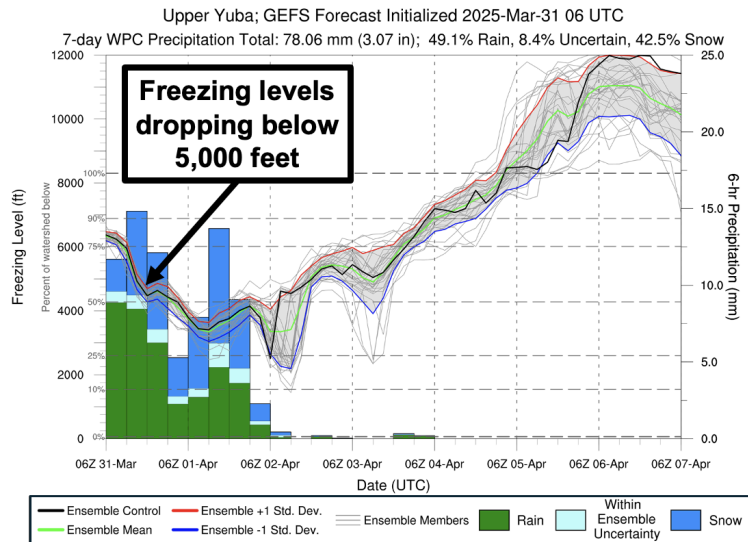
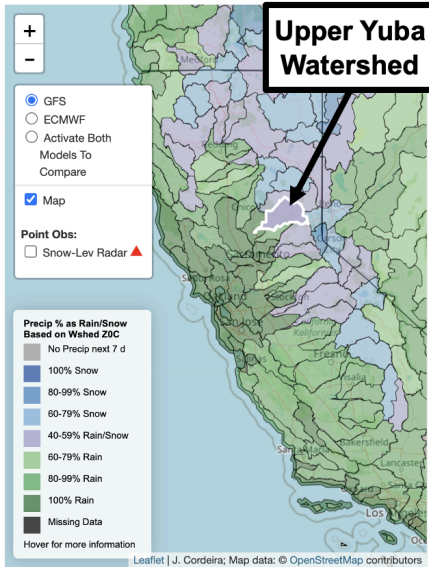
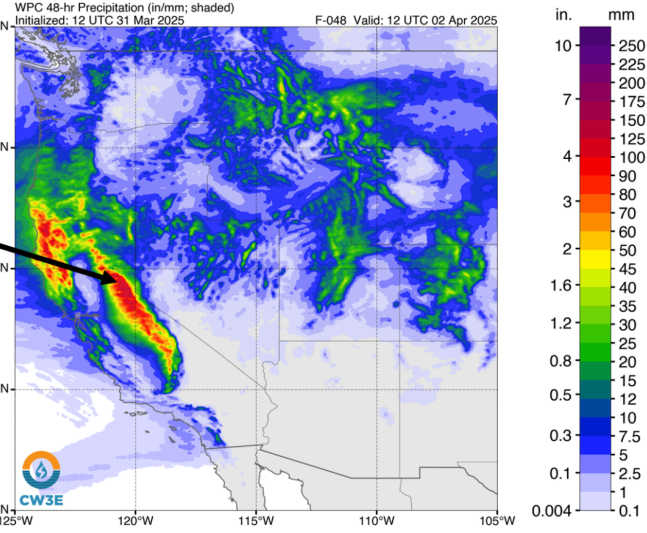
Valid 5 AM PDT 4 Apr (F-096)



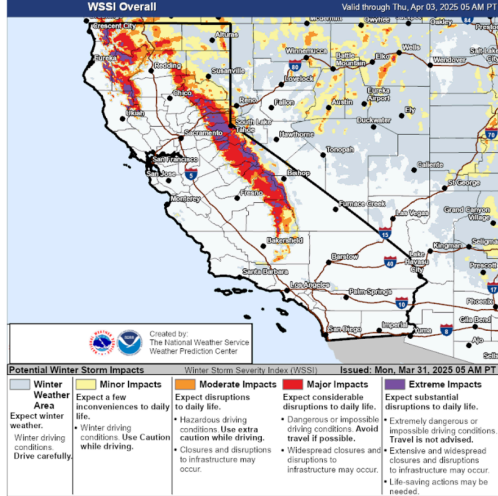
10-day Watershed QPF: New Bullards Bar Catchment



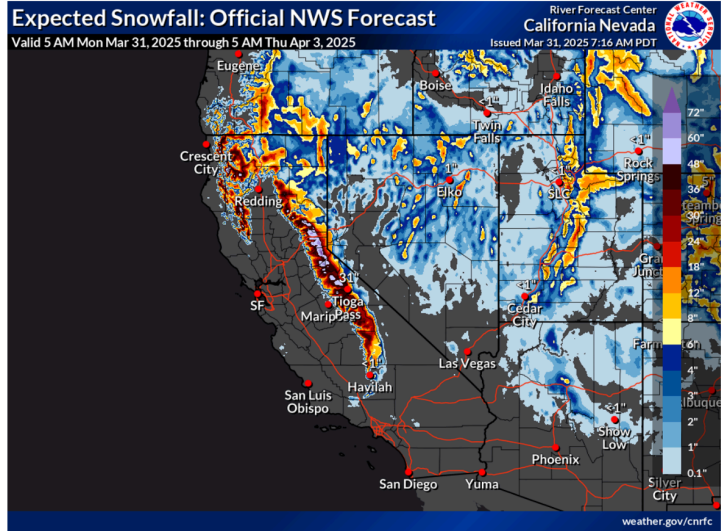
WPC 48-h Total QPF: Valid 5 AM PDT 2 Apr



WPC Days 1-3 Winter Storm Severity Index: Valid through 5 AM PDT 3 Apr



Total Snowfall: Valid through 5 AM PDT 3 Apr



Additional Considerations:

- Visit cnrfc.noaa.gov/ and nwrfc.noaa.gov/ for specific river and stream forecasts and weather.gov/ for point specific watches, warnings, and forecasts.

In-depth AR forecasts products can be found here:

<https://cw3e.ucsd.edu/iwv-and-ivt-forecasts/>

Update by C. Castellano

c1castellano@ucsd.edu